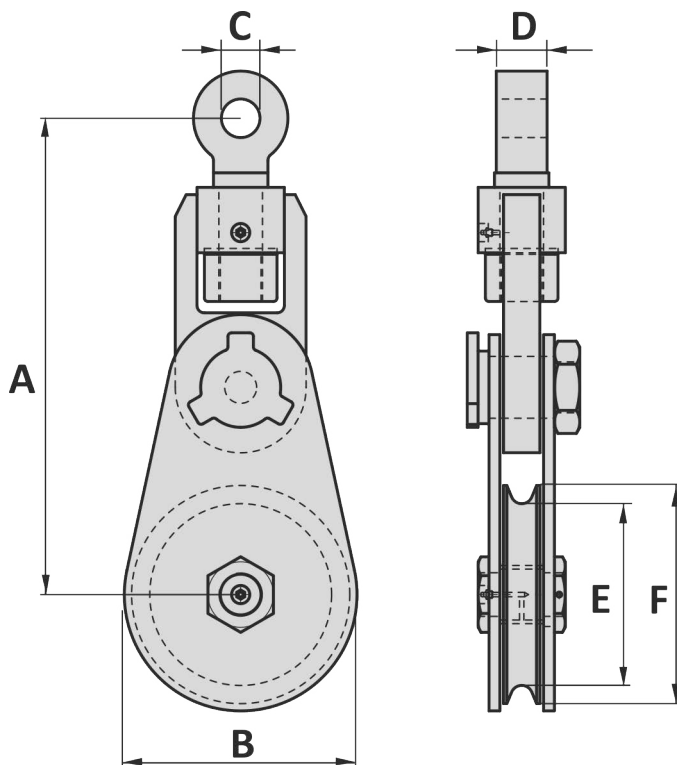




Material : Mild steel
 Safety factor : 4 times
 Finish : Painted
 Temperature range : -4°F up to +392°F
 Standard certification : Certificate of Conformity

Sheave with bronze bearing,
 Sheaves with roller bearing on requested

Groove size can be changed on request for bigger rope sizes



| | WLL eye pull ton | WLL line pull ton | Rope size inch | Rope size mm | A inch | B inch | C inch | D inch | E inch | F inch | Weight lbs |
|-------------------|------------------------|-------------------------|-------------------|-----------------|-----------|-----------|-----------|-----------|-----------|-----------|---------------|
| Light Type | 3.25 | 1.62 | 3/8 | 8 - 10 | 7 13/32 | 3 7/32 | 25/32 | 1 1/32 | 2 3/16 | 3 | 8.8 |
| | 4.75 | 2.37 | 1/2 | 11 - 14 | 9 23/32 | 4 13/16 | 15/16 | 1 3/16 | 3 3/8 | 4 1/2 | 20 |
| | 8.5 | 4.25 | 3/4 | 18 - 20 | 14 | 6 3/8 | 1 3/16 | 1 9/16 | 4 13/32 | 6 | 42 |
| | 8.5 | 4.25 | 3/4 | 18 - 20 | 15 | 8 1/2 | 1 3/16 | 1 9/16 | 6 13/32 | 8 | 53 |
| | 9.5 | 4.75 | 3/4 | 18 - 20 | 16 | 10 5/8 | 1 1/2 | 1 3/4 | 8 7/16 | 10 | 66 |
| | 9.5 | 4.75 | 3/4 | 18 - 20 | 17 9/16 | 12 19/32 | 1 1/2 | 1 3/4 | 10 7/16 | 12 | 86 |
| | 12 | 6 | 3/4 | 18 - 20 | 20 9/16 | 15 19/32 | 1 7/16 | 1 7/8 | 12 13/32 | 14 3/8 | 110 |
| | 13.5 | 6.75 | 7/8 | 22 - 25 | 25 5/8 | 17 | 1 21/32 | 2 1/8 | 14 | 16 | 205 |
| | 17 | 8.5 | 1 | 22 - 25 | 27 7/32 | 19 9/32 | 1 3/4 | 2 1/4 | 16 1/16 | 18 1/32 | 247 |
| Heavy Type | 17 | 8.5 | 1 | 22 - 25 | 19 9/32 | 6 5/16 | 1 3/4 | 2 1/4 | 4 5/16 | 5 29/32 | 108 |
| | 25 | 12.5 | 1 1/8 | 25 - 28 | 23 11/16 | 8 21/32 | 2 3/32 | 2 3/4 | 5 29/32 | 7 7/8 | 172 |
| | 25 | 12.5 | 1 1/4 | 28 - 32 | 24 7/8 | 10 5/8 | 2 3/32 | 2 3/4 | 7 15/32 | 9 27/32 | 203 |
| | 25 | 12.5 | 1 1/4 | 28 - 32 | 26 1/16 | 12 19/32 | 2 3/32 | 2 3/4 | 9 7/16 | 11 13/16 | 247 |
| | 25 | 12.5 | 1 1/4 | 28 - 32 | 27 1/4 | 14 3/4 | 2 3/32 | 2 3/4 | 11 13/32 | 13 25/32 | 280 |
| | 35 | 17.5 | 1 1/2 | 32 - 38 | 32 7/8 | 18 1/2 | 2 3/8 | 3 5/32 | 14 31/32 | 17 23/32 | 470 |
| | 35 | 17.5 | 1 1/2 | 32 - 38 | 34 1/16 | 20 19/32 | 2 3/8 | 3 5/32 | 16 15/16 | 19 11/16 | 536 |
| | 35 | 17.5 | 1 1/2 | 32 - 38 | 36 13/32 | 24 3/8 | 2 3/8 | 3 5/32 | 21 1/16 | 23 13/16 | 679 |
| | 55 | 27.5 | 1 5/8 | 38 - 42 | 40 11/16 | 24 3/8 | 2 7/8 | 3 19/16 | 20 15/32 | 23 13/16 | 990 |
| | 85 | 42.5 | 1 7/8 | 44 - 48 | 47 23/32 | 30 23/32 | 3 11/32 | 4 23/32 | 24 13/16 | 29 17/32 | 2068 |
| | 120 | 60 | 2 | 50 - 55 | 52 1/4 | 34 3/4 | 3 15/16 | 5 1/2 | 29 1/8 | 33 7/8 | 2908 |
| | 150 | 75 | 2 1/2 | 60 - 70 | 56 3/16 | 36 3/8 | 4 7/16 | 6 5/16 | 29 15/16 | 35 13/16 | 3527 |
| | 200 | 100 | 3 | 75 - 85 | 64 3/16 | 42 1/2 | 5 5/16 | 6 11/16 | 34 1/4 | 41 3/4 | 5038 |
| | 250 | 125 | 3 1/2 | 88 - 93 | 70 9/32 | 46 23/32 | 5 23/32 | 7 15/32 | 38 3/16 | 46 1/16 | 6647 |

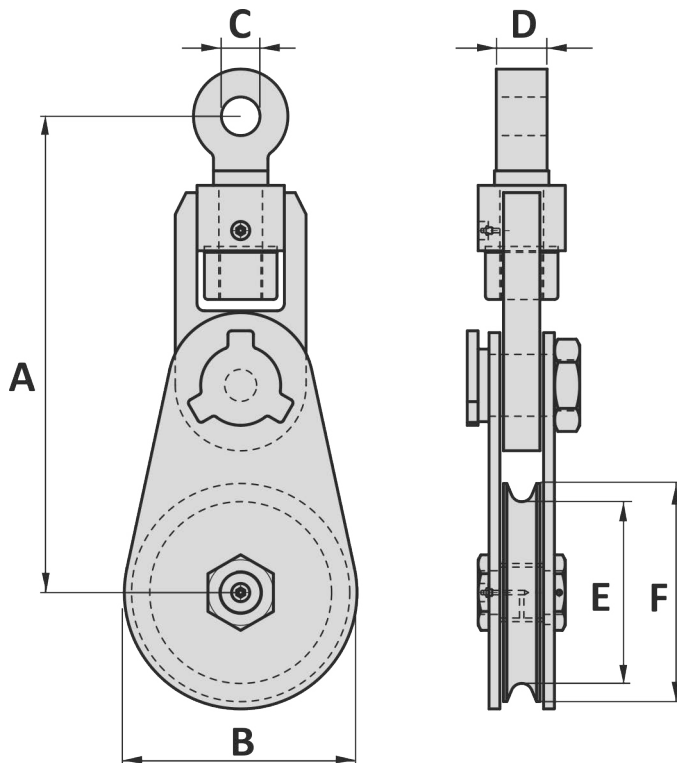
Tolerance: Forged parts ± 5%, machined parts ± 1/32 inch



Material : Mild steel
 Safety factor : 4 times
 Finish : Painted
 Temperature range : -20°C up to +200°C
 Standard certification : Certificate of Conformity

Sheave with bronze bearing,
 Sheaves with roller bearing on requested

Groove size can be changed on request for bigger rope sizes



| | WLL eye pull | WLL line pull | Rope size inch | Rope size mm | A | B | C | D | E | F | Weight |
|------------|-----------------|------------------|----------------------|--------------------|------|------|-----|-----|-----|------|--------|
| Light Type | ton | ton | | | mm | mm | mm | mm | mm | mm | kg |
| | 3.25 | 1.62 | 3/8 | 8 - 10 | 188 | 82 | 20 | 26 | 56 | 76 | 4 |
| | 4.75 | 2.37 | 1/2 | 11 - 14 | 250 | 122 | 24 | 30 | 86 | 114 | 9 |
| | 8.5 | 4.25 | 3/4 | 18 - 20 | 356 | 162 | 30 | 40 | 112 | 152 | 19 |
| | 8.5 | 4.25 | 3/4 | 18 - 20 | 381 | 216 | 30 | 40 | 163 | 203 | 24 |
| | 9.5 | 4.75 | 3/4 | 18 - 20 | 406 | 270 | 34 | 44 | 214 | 254 | 30 |
| | 9.5 | 4.75 | 3/4 | 18 - 20 | 446 | 320 | 34 | 44 | 265 | 305 | 39 |
| | 12 | 6 | 3/4 | 18 - 20 | 516 | 396 | 37 | 48 | 315 | 365 | 50 |
| | 13.5 | 6.75 | 7/8 | 22 - 25 | 645 | 430 | 42 | 54 | 356 | 406 | 93 |
| | 17 | 8.5 | 1 | 22 - 25 | 690 | 490 | 44 | 57 | 408 | 458 | 112 |
| Heavy Type | | | | | | | | | | | |
| | 17 | 8.5 | 1 | 22 - 25 | 490 | 160 | 44 | 57 | 110 | 150 | 49 |
| | 25 | 12.5 | 1 1/8 | 25 - 28 | 602 | 220 | 53 | 70 | 150 | 200 | 78 |
| | 25 | 12.5 | 1 1/4 | 28 - 32 | 632 | 270 | 53 | 70 | 190 | 250 | 92 |
| | 25 | 12.5 | 1 1/4 | 28 - 32 | 662 | 320 | 53 | 70 | 240 | 300 | 112 |
| | 25 | 12.5 | 1 1/4 | 28 - 32 | 692 | 370 | 53 | 70 | 290 | 350 | 127 |
| | 35 | 17.5 | 1 1/2 | 32 - 38 | 835 | 470 | 60 | 80 | 380 | 450 | 213 |
| | 35 | 17.5 | 1 1/2 | 32 - 38 | 865 | 520 | 60 | 80 | 430 | 500 | 243 |
| | 35 | 17.5 | 1 1/2 | 32 - 38 | 925 | 625 | 60 | 80 | 535 | 605 | 308 |
| | 55 | 27.5 | 1 5/8 | 38 - 42 | 1040 | 625 | 73 | 100 | 520 | 605 | 449 |
| | 85 | 42.5 | 1 3/4 | 44 - 48 | 1212 | 780 | 85 | 120 | 630 | 750 | 938 |
| | 120 | 60 | 2 | 50 - 55 | 1327 | 880 | 100 | 140 | 740 | 860 | 1319 |
| | 150 | 75 | 2 1/2 | 60 - 70 | 1427 | 930 | 113 | 160 | 760 | 910 | 1600 |
| | 200 | 100 | 3 | 75 - 85 | 1630 | 1080 | 135 | 170 | 870 | 1060 | 2285 |
| | 250 | 125 | 3 1/2 | 88 - 93 | 1785 | 1190 | 145 | 190 | 970 | 1170 | 3015 |

Tolerance: Forged parts ± 5%, machined parts ± 1 mm

20-11-2014